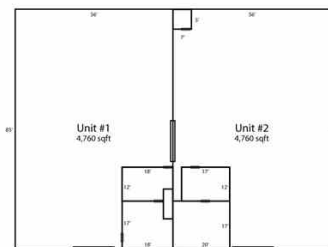


Most Uses Allowed



\$139,000



322 CARLISLE ST, Harrisburg, PA 17104

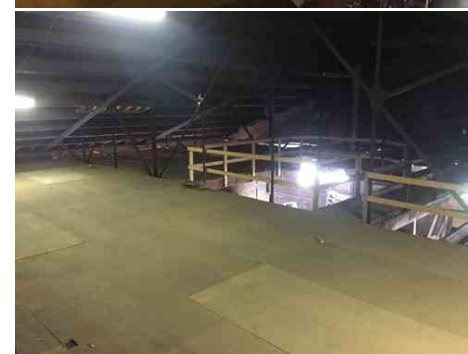
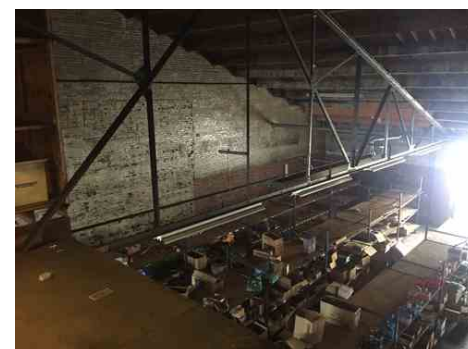
WEB: 322CARLISLEST.IsForSale.com

- » **Beds:** 3 | **Baths:** 1 Full, 1 Half
- » **MLS #:** 1002662261
- » Commercial | 9,520 ft² | Lot: 10,000 ft²
- » 2 Overhead Garage Doors
- » Attic Storage space with additional 2000 sq ft
- » 2 Seperate Units each w/ Office spaces
- » Distribution, Storage, Shop, Garage
- » 26 ft ceilings

QR Code



Michael Fleegal
(717) 525-1297 (Cell/Txt)
fleegalm@gmail.com



Behind the Big Ugly Warehouse... Former Try Coffee Group LTD of the Coffee & Cocoa International coffee roaster building now turned warehouse, Most uses are allowed; Distribution, Storage, Shop, Garage. Two overhead garage doors, Two units with 4,760 sqft each, ceilings approximately 26 ft. Office w/kitchen area. Can be rented as 2 separate units as an investment property. A 2nd level attic space offers additional 2,000 sq ft of extra storage. Basement w/full bath. Schedule showings online or call/txt: Michael Fleegal at (717) 525-1297

322 CARLISLE ST, Harrisburg, PA 17104

\$139,000 2 Baths 9,520 sq ft

Watch the Video:

*Ask how a simple referral can pay-off for you on your next home!. ©Properties Online, Inc. The above information including square footage is based on data received from the seller and/or from public sources. This information is deemed reliable but has not been independently verified and cannot be guaranteed. Prospective buyers are advised to verify information to their own satisfaction prior to purchase. Equal Housing Opportunity. Any Tradenames and Trademarks referred to within are the property of their respective trademark holders.

